

PETER BLUM GALLERY

Luisa Rabbia

From Mitosis to Rainbow

November 7, 2020 – January 9, 2021

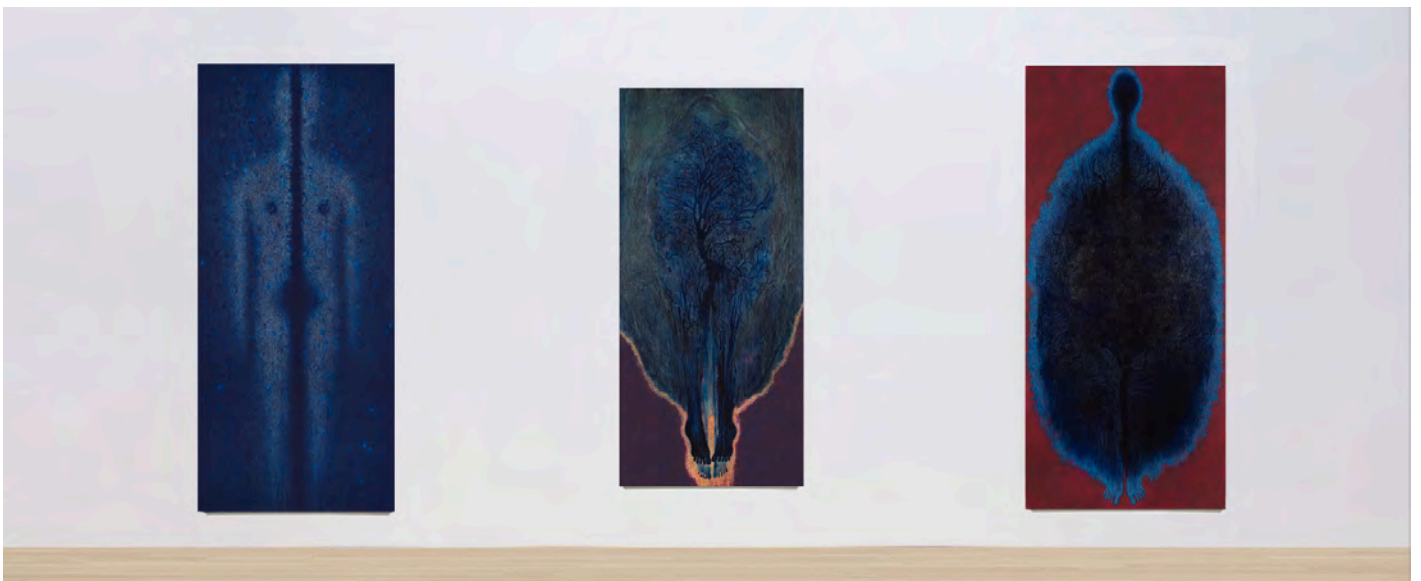


"My work starts with a countless number of fingerprints on canvas, my approach is physical and intuitive. Whether I intertwine pencil lines or I engrave wet paint, tiny marks accumulate over a large surface referencing both time and the responsibility that comes with every single action."

— Luisa Rabbia

Luisa Rabbia blends the distinctions made between the human and the natural, expressing solidarity with the cosmos through the organic, bodily landscapes of her expansive paintings. The scale of Rabbia's paintings suits the themes she explores, oftentimes depicting overlapping abstracted figures joining and breaking apart, seemingly overcoming their physicality. In the exhibition she alludes to interconnected natural processes such as mitosis, forming a thread between microcosms and macrocosms and interweaving them in a nebulous primordial state. Continually in flux and transforming like a rainbow, her forms created in expressive hues also evoke spiritual transitions. Upon closer viewing and bringing this substantial work to a more intimate level, her physical and intuitive process becomes visible with its rhythmically scraped paint, the stratification of pencil marks, and imprints of fingertips. Rabbia alludes to the minute traces that each person leaves over the course of a lifetime, yet simultaneously asserts an expansive and interconnected vision of a wider universe.

Luisa Rabbia (b. 1970, Turin, Italy) lives and works in Brooklyn, NY. She received her MFA from the Accademia Albertina di Belle Arti in Turin, Italy. Solo museum exhibitions include: Collezione Maramotti, Reggio Emilia, Italy; Isabella Stewart Gardner Museum, Boston, MA; Fundación PROA, Buenos Aires, Argentina; Fondazione Querini Stampalia, Venice, Italy; Fondazione Merz, Turin, Italy. Group exhibitions include: Magazzino Italian Art Foundation, Cold Spring, NY; Manifesta 12, Palazzo Drago, Palermo, Italy; Palazzo delle Esposizioni, Rome, Italy; Biennale del Disegno, Museo della Citta, Rimini, Italy; Lismore Castle, Waterford, Ireland; Shirley Fiterman Art Center, New York, NY; Maison Particulière, Brussels, Belgium; Carpenter Center for the Visual Arts, Harvard University, Cambridge, MA; Museo del Novecento, Milan, Italy; MAXXI Museo Nazionale delle Arti del XXI secolo, Rome, Italy; Shanghai Museum of Contemporary Art, Shanghai, China.





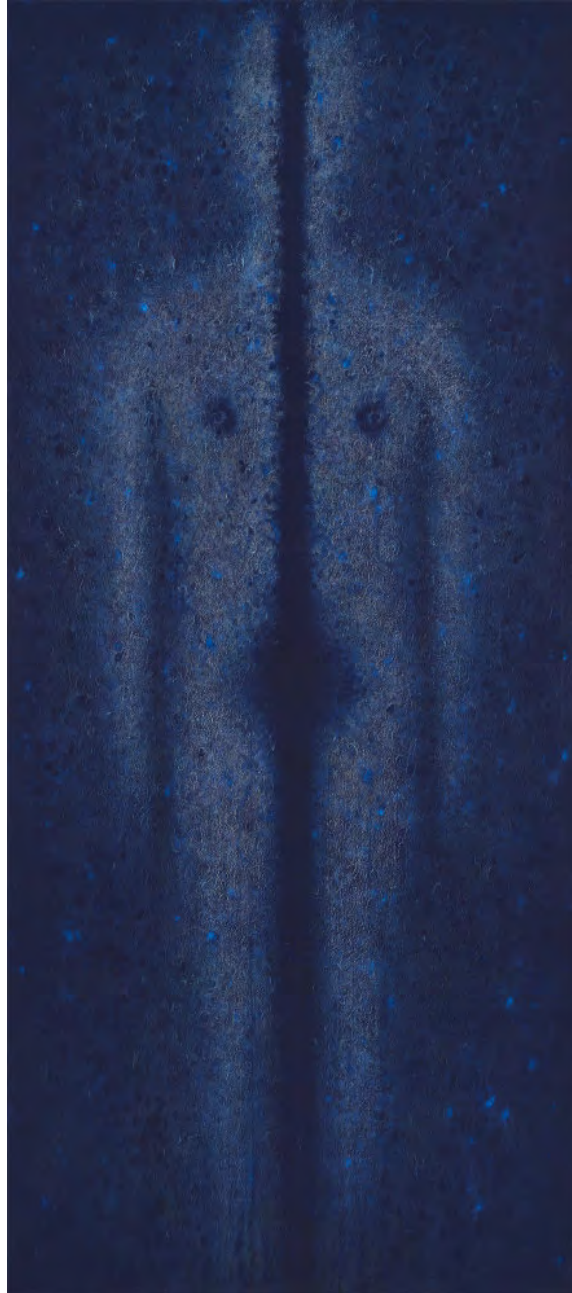
Luisa Rabbia

I Am Rainbow, 2020

Oil on canvas

87 x 128 inches (221 x 325 cm)

\$ 50,000



Luisa Rabbia

Mitos, 2018

Colored pencil, pastel and acrylic on canvas
118 x 53 inches (300 x 134.5 cm)

\$ 40,000



Luisa Rabbia

Ecstasy, 2019

Colored pencil, pastel, acrylic and oil on canvas
102 x 47 inches (260 x 119 cm)

\$ 40,000



Luisa Rabbia

Whole, 2019

Colored pencil, pastel, acrylic and oil on canvas
118 x 53 inches (300 x 134.5 cm)

\$ 40,000



Luisa Rabbia
Chorus, 2020
Oil on canvas
102 x 45 inches (260 x 114 cm)

\$ 40,000



Luisa Rabbia

Embrace, 2019

Colored pencil, pastel and acrylic on canvas
103 x 53 inches (261.5 x 134.5 cm)

\$ 40,000



Luisa Rabbia

Threshold, 2019

Colored pencil, pastel, acrylic and oil on canvas
103 x 53 inches (261.5 x 134.5 cm)

\$ 40,000



Luisa Rabbia
Poles, 2020
Oil on canvas
94 x 51 inches (239 x 129.5 cm)

\$ 35,000



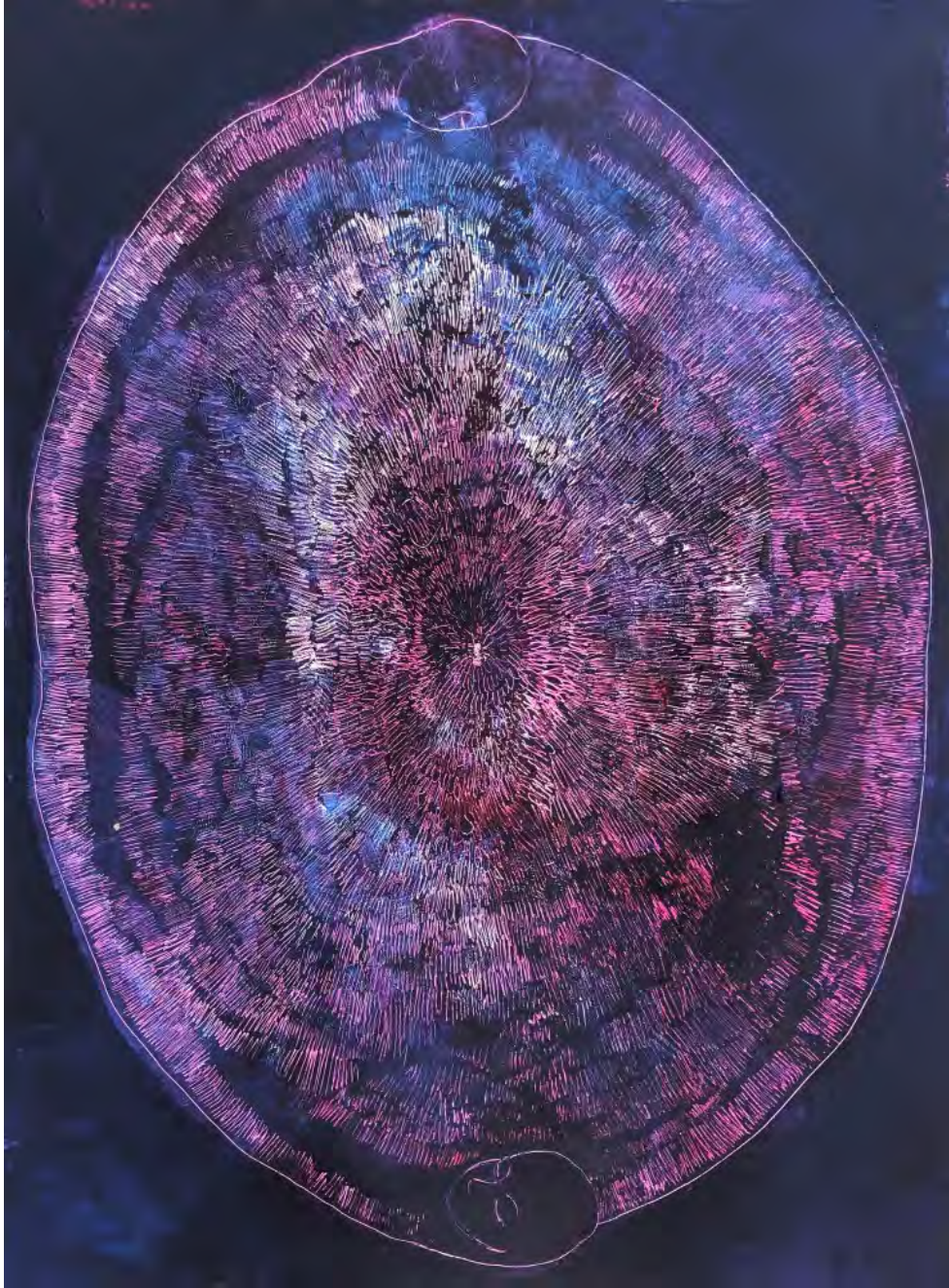
Luisa Rabbia

Nameless, 2019

Colored pencil, pastel, acrylic and oil on canvas

45 x 96 inches (114 x 244 cm)

\$ 35,000



Luisa Rabbia
World, 2020
Acrylic on canvas
16 x 12 inches (40.5 x 30.5 cm)

\$ 8,000



Luisa Rabbia
Expanse, 2020
Oil on canvas
12 x 16 inches (30.5 x 40.5 cm)
\$ 8,000



Luisa Rabbia
Untitled, 2019
Oil on canvas
11 x 8 inches (28 x 20 cm)

\$ 6,500



Luisa Rabbia
Untitled, 2020

Ceramic

12 x 10 inches (30.5 x 25.5 cm)

\$ 9,000



Luisa Rabbia

Winter, 2019

Self-hardening clay and oil

5 x 16 x 2 inches (12.5 x 40.5 x 5 cm)

\$ 8,000